



GENERAL FEATURES

- Rack size **60x50 cm**
- Gross weight: 81,5 Kg
- Wash cycles/racks per hour: 2'-3'-6'-9' / 30-15-10-7
- Stainless-steel wash/rinse arms
- Wash pump: 680 W
- Boiler capacity: 5,5 liters
- Tank capacity: 22 liters
- Boiler heating element: 6 kW
- Tank heating element: 2,4 kW
- Water quantity per cycle: 2 liters
- Electronic controls with LCD display
- Useful washing height: 400 mm
- Magnetic door microswitch
- Automatic water filling
- Double electric detergent and rinse-aid dispenser
- Hot rinse
- Thermostop function
- PRS system (Atmospheric Boiler+break tank)
- SD System (Smart drain without overflow pipe)
- Drain pump
- Green function for energy saving
- Automatic end-of-day self-cleaning of wash tank
- Washing pump with "soft-start"

FILTRATION

- Plastic wash pump filter, easily removable
- Stainless-steel surface filters

BODY

- AISI 304 stainless-steel body
- Double skinned body
- Preformed wash tank
- Preformed rack guides
- Door handle in s/s
- Stainless-steel wash/rinse arms, easily removable
- Boiler in stainless-steel AISI 316

EQUIPMENT

- 1 stainless-steel rack 4 trays
- 1 utensil rack 60x50 cm
- 1 inlet hose (2 mt length)
- 1 drain hose (2,5 mt length)

OPTIONS

- Hot water filling (max 85°C)
- HD version (Tot. P. 9,08 kW in 380-415V 3N~50Hz)
- 60Hz version
- Kit high feet

ACCESSORIES FOR THE WATER TREATMENT

- Built-in water softener ("S" version) max 35 °f-22 °d
- External water softener max 90 °f-50°d

ACCESSORIES

- Special racks
- S/S stand

INSTALLATION

- Use the screws of the feet and a spirit level to ensure that the machine is levelled

MAIN POWER SUPPLY

- The voltage of main power supply must be compatible with the rated voltage
- The machine must be connected to a suitable earth (ground) system
- Connect the machine power socket to the multipole wall switch provided

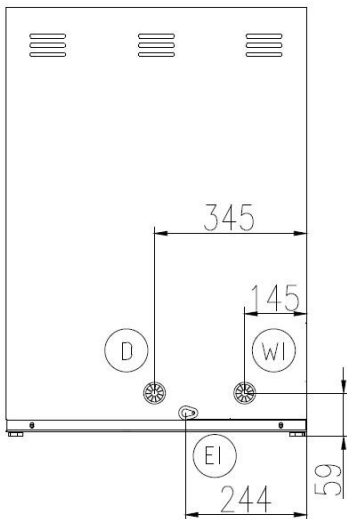
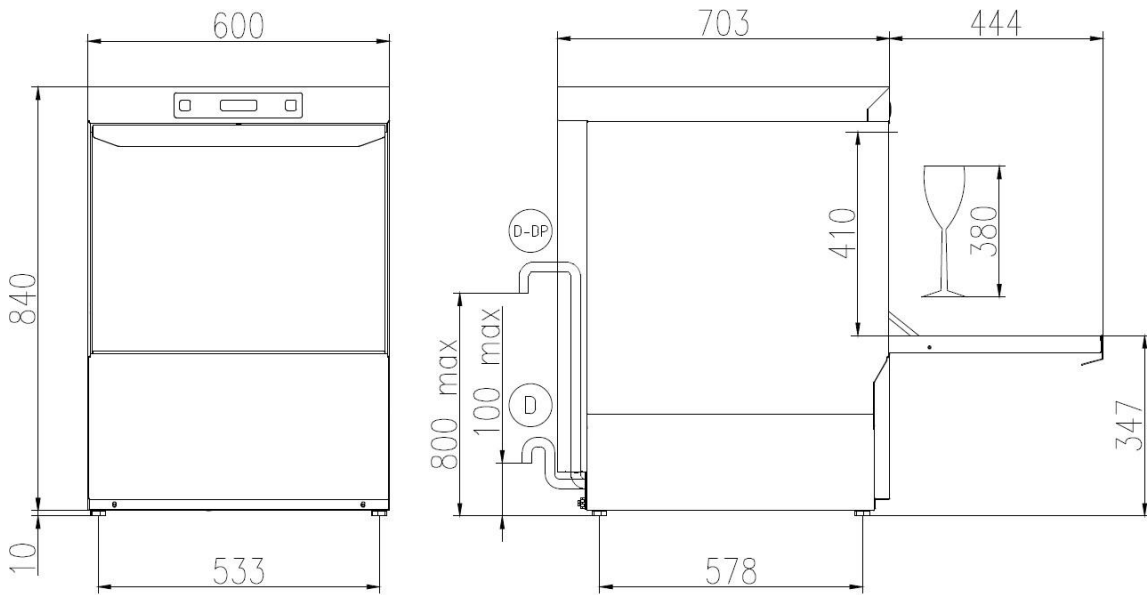
WATER SUPPLY CONNECTION

- A water softener must be installed if the water is hard
- The water pressure must be between 0.1MPa (1 bar) and 0.5MPa (5 bar)
- The temperature of the water supply must be between 10°C to 50°C (max 25°C with water softener)

TECHNICAL SPECIFICATIONS

- Electrical supply: **380-415V 3N / 220-240V3 / 220-240V ~ 50Hz**
- Total power: **6,68 kW (9,08 kW in HD)**
- Absorbed current: **10 A / 17 A / 29 A (22 A in HD)**
- Power cord supply size: **5 x 2,5 mm² / 3 x 4 mm²**

AU 60.40^E PRS SD



CAVO DI ALIMENTAZIONE
POWER CORD SUPPLY
CABLE D'ALIMENTATION
CABLE DE ALIMENTACION



CANNA DI CARICO G 3/4 L=2000 mm
G 3/4 INLET HOSE L=2000 mm
TUYAU D'ALIMENTATION G 3/4" L=2000 mm
TUBO DE ALIMENTACION G 3/4" L=2000 mm



TUBO DI SCARICO Ø 29 mm L=2500 mm
DRAIN HOSE Ø 29 mm L=2500 mm
TUYAU DE VIDANCE Ø 29 mm L=2500 mm
TUBO DE DESAGUE Ø 29 mm L=2500 mm



TUBO DI SCARICO Ø 29 mm L=2500 mm (CON POMPA SCARICO)
DRAIN HOSE Ø 29 mm L=2500 mm (WITH DRAIN PUMP)
TUYAU DE VIDANCE Ø 29 mm L=2500 mm (AVEC POMPE DE VIDANCE)
TUBO DE DESAGUE Ø 29 mm L=2500 mm (CON POMPA DE DESAGUE)

	Min 10°C—MAX 50°C
	Min 10°C—MAX 25°C with ENERGY RECOVERY
	200÷500kPa(2÷5 Bar)
	100÷500kPa(1÷5 Bar) with ATMOSPHERIC BOILER
	HARDNESS 5÷20f—2.8÷11'd