



## GENERAL FEATURES

- Rack size 60x50 cm
- Gross weight: 75 Kg
- Washing cycle/racks/hour: 2'-4'-6'-9' / 30-15-10-7
- Bottom wash/rinse arm
- Wash pump: 680 W
- Boiler capacity: 5 liters
- Tank capacity: 22 liters
- Boiler heating element: 4,5 kW
- Tank heating element: 2,4 kW
- Water quantity per cycle: 2 liters
- Electronic controls LCD display
- Useful washing height: 400 mm
- Magnetic door microswitch
- Automatic water filling
- Double electric detergent and rinse dispenser
- Hot rinse
- Thermostop function
- Anti back-flow valve
- Green Functom for energy saving
- Automatic end-of-day self cleaning of water
- Washing pump with Soft-start

## FILTRATION

- Removable plastic pump filter in several sections
- Stainless steel surface filters

## BODY

- AISI 304 stainless steel Body
- Double skinned body
- Preformed wash tank
- Preformed rack guides
- Door handle in s/s
- Wash/rinse arms in s/s, easily removable
- Boiler in s/s AISI 304
- PVC protection rear the bottom front panel

## EQUIPMENT AS GLASSWASHER

- 1 stainless steel rack 4 trays
- 1 utensil basket 60x50 cm
- 1 inlet hose (length 2 m)
- 1 drain hose (length 2,5 m)

## OPTIONAL

- Drain pump
- Boiler heating element 6 kW
- Switchable voltage
- 60 Hz version
- Hot water filling
- Kit surface filters
- Kit booster pump

## ACCESSORIES FOR WATER TREATMENT

- Integrated water softener unit ("S" model)

## ACCESSORIES

- Special baskets
- S/S supporting stand h. mm. 550 for basket

## INSTALLATION

- Use the screws of the feet and a spirit level to ensure that the machine is levelled

## MAIN POWER SUPPLY

- The voltage of main power supply must be compatible with the rated voltage
- The machine must be connected to a suitable earth (ground) system
- Connect the machine power socket to the multipole wall switch provided

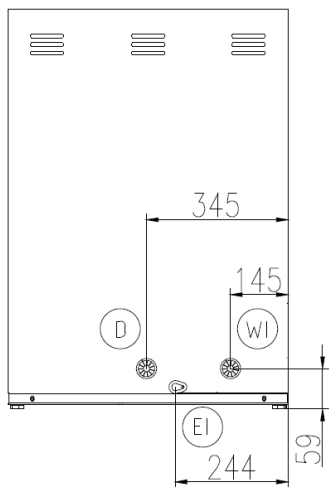
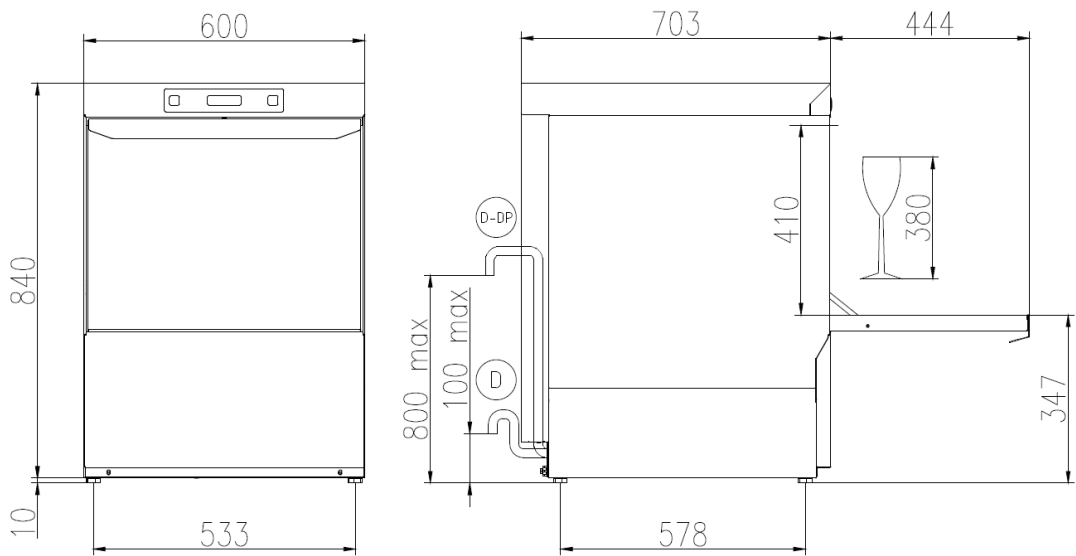
## WATER SUPPLY CONNECTION

- A water softener must be installed if the water is hard
- The water pressure must be between 0.2MPa (2 bar), and, 0.5MPa (5 bar)
- The temperature of the water-supply must be between 10°C to 50°C

## TECHNICAL SPECIFICATIONS

- Voltage: 380-415V3N / 220-240V3 / 220-240V~50 Hz
- Total power: 5,18 kW
- Amperage: 10 A / 15 A / 23 A
- Power cord supply size: 5 x 2,5 / 3 x 4 mmq

AU 60.40<sup>E</sup>



- EI** CAVO DI ALIMENTAZIONE  
POWER CORD SUPPLY  
CABLE D'ALIMENTATION  
CABLE DE ALIMENTACION
- WI** CANNA DI CARICO G 3/4 L=2000 mm  
G 3/4 INLET HOSE L=2000 mm  
TUYAU D'ALIMENTATION G 3/4" L=2000 mm  
TUBO DE ALIMENTACION G 3/4" L=2000 mm
- D** TUBO DI SCARICO Ø 29 mm L=2500 mm  
DRAIN HOSE Ø 29 mm L=2500 mm  
TUYAU DE VIDANGE Ø 29 mm L=2500 mm  
TUBO DE DESAGUE Ø 29 mm L=2500 mm
- D-DP** TUBO DI SCARICO Ø 29 mm L=2500 mm (CON POMPA SCARICO)  
DRAIN HOSE Ø 29 mm L=2500 mm (WITH DRAIN PUMP)  
TUYAU DE VIDANGE Ø 29 mm L=2500 mm (AVEC POMPE DE VIDANGE)  
TUBO DE DESAGUE Ø 29 mm L=2500 mm (CON POMPA DE DESAGUE)

	Min 10°C—MAX 50°C
	Min 10°C—MAX 25°C with ENERGY RECOVERY
	200÷500kPa(2÷5 Bar)
	100÷500kPa(1÷5 Bar) with ATMOSPHERIC BOILER
	HARDNESS 5÷20'f—2.8÷11'd